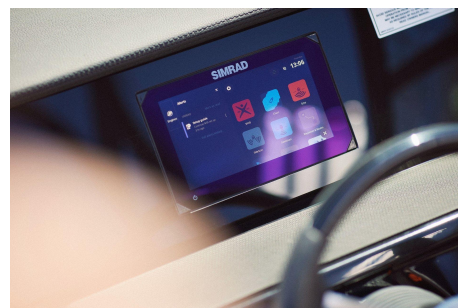




SEA RAY SPX210 OB

Priced from \$162,584



Disclaimer

Our company offers the details of this vessel in good faith but cannot guarantee or warrant the accuracy of this information nor warrant the condition of the vessel. A buyer should instruct his agents and/or surveyors to investigate such details buyer desires validated. This vessel is offered subject to prior sale, price change or withdrawal without notice.

Specifications

Boat Details

Price	Priced from \$162,584	Boat Brand	Sea Ray
Model	210 SPX OB	Length	7.01
Year	2024	Category	Sports Boats
Hull Style	Single	Hull Type	Fibreglass
Power Type	Power	Stock Number	5129796
Condition	New	State	New South Wales
Suburb	ROZELLE	Engine Make	Mercury

Description

SEARAY SPX 210 OB - NEW ORDERS FROM \$162,584

POWERED BY A MERCURY 150 HP FOUR STROKE OUTBOARD

CALL US TO ADD OPTIONS & ENGINE UPGRADES

The Sea Ray SPX 210 OB is a sleek and versatile boat that is perfect for both day trips and water sports. Powered by a reliable Mercury outboard engine, this boat offers a smooth and agile ride on the water. Measuring 6.55 meters in length and 2.59 meters in beam, the SPX 210 OB provides ample space for up to 12 passengers.

The cockpit of the SPX 210 OB is designed with comfort and convenience in mind, featuring comfortable seating, a convenient sink and cooler, and plenty of storage space for all your gear. The boat also includes a top-of-the-line sound system and advanced electronics, making it perfect for entertaining or just relaxing with friends and family.

Overall, the Sea Ray SPX 210 OB is an excellent option for those who want a stylish and practical boat for their next water adventure. Its spacious interior, powerful outboard engine, and luxurious features make it an ideal choice for those who want to enjoy the water in both comfort and style. Whether you're into water sports or just cruising around, the SPX 210 OB is sure to exceed your expectations.

your Sea Ray will hold its value and offer better returns once you are ready to upgrade to a new/next model or larger boat down the track.

THE PACKAGE INCLUDES PROFESSIONAL ON-WATER TRAINING AND FAMILIARIZATION, NSW REGISTRATIONS AND ENCLOSED WATERS SAFETY EQUIPMENT, AND DOCKING EQUIPMENT INCLUDING ROPES AND FENDERS.

CMG at Sydney Boathouse, 2/2 Waterways Court, Sydney, our friendly staff will be pleased to help with your specific requirements.

We can arrange Mercury finance, Mercury insurance, and transport/shipping directly to you,

Our Brands include Sea Ray, Beneteau, Bella, Falcon, Flipper, Cobia, and Mercury and cover a range of styles including Bowriders, Deck boats, Ski and Wakeboard boats, Runabouts, Centre Consoles, Tenders, Skiffs, Dual Console, Walk-around, Cuddy Cabin, Half Cabin, Cabin boats, Express Cruisers, Sports Cruisers, High-performance

Disclaimer

Our company offers the details of this vessel in good faith but cannot guarantee or warrant the accuracy of this information nor warrant the condition of the vessel. A buyer should instruct his agents and/or surveyors to investigate such details buyer desires validated. This vessel is offered subject to prior sale, price change or withdrawal without notice.

power boats, and Luxury Motor yachts.

Some images are samples only and may show factory options/upgrades/hull colours not included in the standard package.

Australian-compliant trailers are available but not included in the listed price.

Features

Designer	SEA RAY
Builder	SEA RAY
Hull Construction Material	GRP
Length (m)	7.24
Beam/Width (m)	2.59
Draft (m)	0.79
Dry Weight (kgs)	1370
Deadrise (degrees)	19
Passenger capacity	12/771kg

Engine Details

Engine Make	Mercury
Horse Power	150
Fuel Type	Petrol
Drive Type	Outboard
Fuel Capacity	140

Disclaimer

Our company offers the details of this vessel in good faith but cannot guarantee or warrant the accuracy of this information nor warrant the condition of the vessel. A buyer should instruct his agents and/or surveyors to investigate such details buyer desires validated. This vessel is offered subject to prior sale, price change or withdrawal without notice.